

Ten.tuba 2 (Bb)

Eder Keteer

comp. G Reinders
arr. Douwe Medema

$\text{♩} = 116$ *molto leggiero*

10

1st.time TACET

8



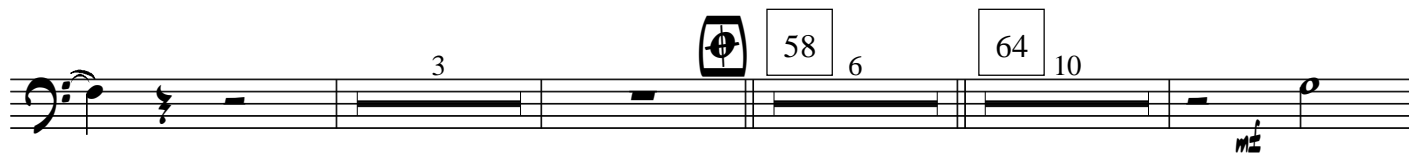
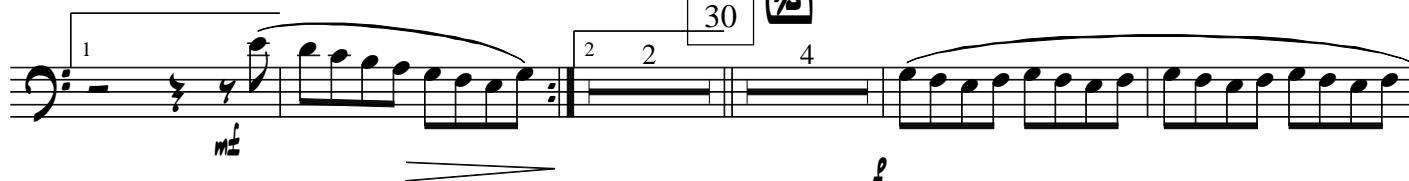
play 2 times

6

2



30



D.S. al Coda

Eder Keteer Ten.tuba 2 (Bb)

82  88

2

96 16 112 6 1 2 2 122 8

132 12 8